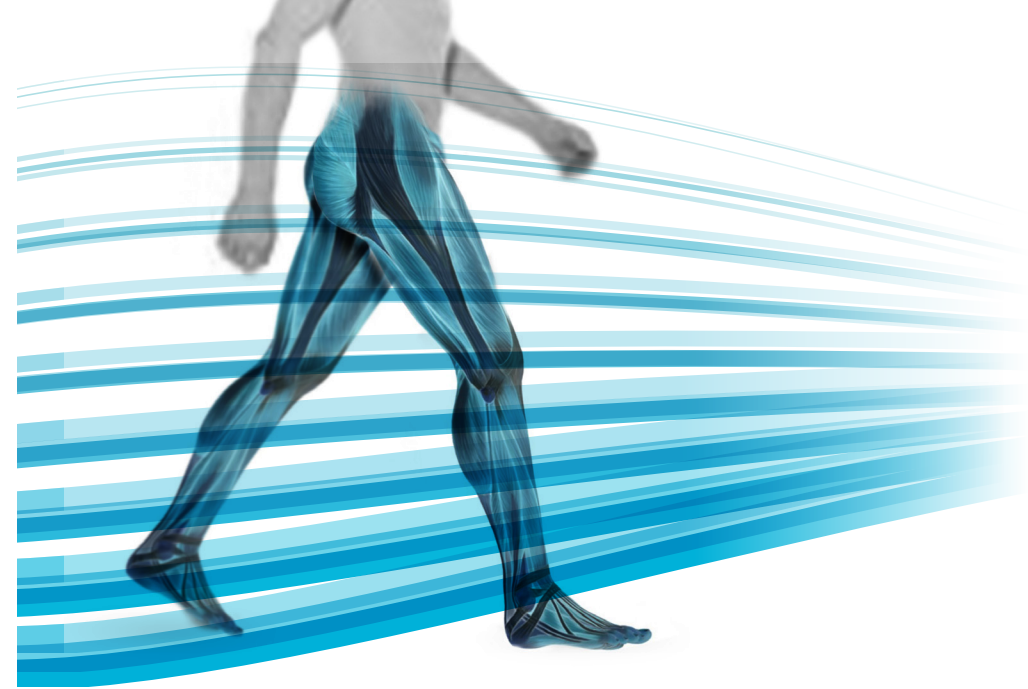


Step 5 Test the OptoGait bars and the webcam

- a. While still in the Utility Section, select the **<OptoGait Hw Test>** button. You should see the live videos feed coming from the webcam(s) and the representation of the attached bars;
- b. Click the **<Execute>** button to perform a hardware test;
- c. Confirm that the system is activated by walking between the bars. As you interrupt the LEDs the corresponding red lights will turn on in both the hardware bars and in the software bars shown graphically on your screen.
- d. Click **"Stop"** to end the hardware test. You should next get a message "Test terminated. Some of the LEDs are interrupted. Filter these LEDs during the acquisition?" Click "NO" unless you plan to filter out LEDs during actual testing (i.e. hurdles, cones);
- e. Click the **"Back"** button to return to the main screen.

You are now ready to insert Patients, create/run Tests, and observe Results.

www.optogait.com



OPTOGAIT

Quick Installation Guide

Step 1 Install OptoGait.exe

- Launch the executable file "OptoGait.Exe" found on the Usb Key provided with the Kit, or downloaded from www.optogait.com website;
- Follow the wizard (Fig. 1) by clicking "Next>" until the software is completely installed;
- DO NOT RUN** the software, until you perform the steps 2 and 3.

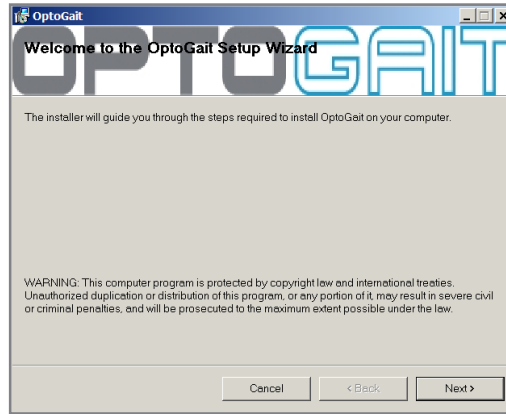


Figure 1

Step 2 Attach the webcam and install driver updates

- Attach the Logitech webcam to the PC's USB port and wait until the driver is completely installed. For longer distance than 1,5 mt. please use the white USB extension cable (Fig. 2);
- If you're using your webcam with Windows® 10/8.1/8, the software required is downloaded automatically when you connect your webcam for the first time, and installed silently in the background.



Figure 2

Important: Make sure you're connected to the Internet, so the software can be downloaded. If you're using your webcam with Windows® 7 or Windows Vista®, you must install the Logitech® Webcam Software, available from: logitech.com/downloads

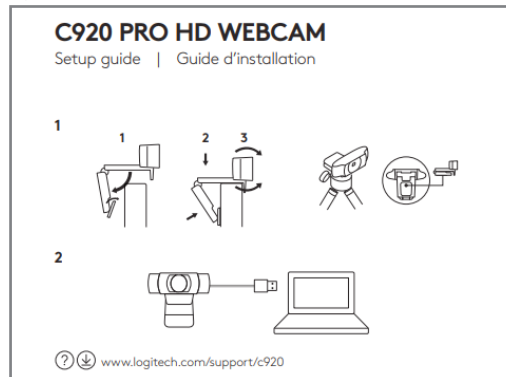


Figure 3

Step 3 Attach the OptoGait Hardware

- Connect the black USB cable (Fig. 4) from the OptoGait RX Bar to the PC;
- Power on the system by toggling the switches on each bar. You should see near the power socket a green-flashing LED indicating batteries are charged. In case the LED is red-flashing, connect the power (see par. 4.3 on user manual);
- Align the TX and RX bars in front of each other (max 6 meters distance) until the LED status indicator positioned along the RX bar (Fig. 5) become from "red" to "green";
- Wait until the driver is successfully installed (Fig. 7) before moving to the next Step 4.



Figure 4



Figure 5



Figure 6

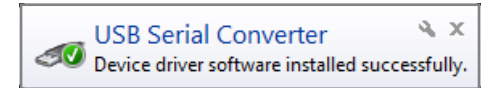


Figure 7

Step 4 Launch the OptoGait Software and select the webcam

- Launch the software by double-clicking the OptoGait desktop icon;
- Choose the desired language and wait until the software is completely loaded;
- To select and test the webcam, click "Utility" on the Main Menu and then the "Basic Settings" button in the left column.
- In the Video Section, choose the **Logitech Webcam [model]** from the dropdown menu and then click the "Test" button (Fig.8);

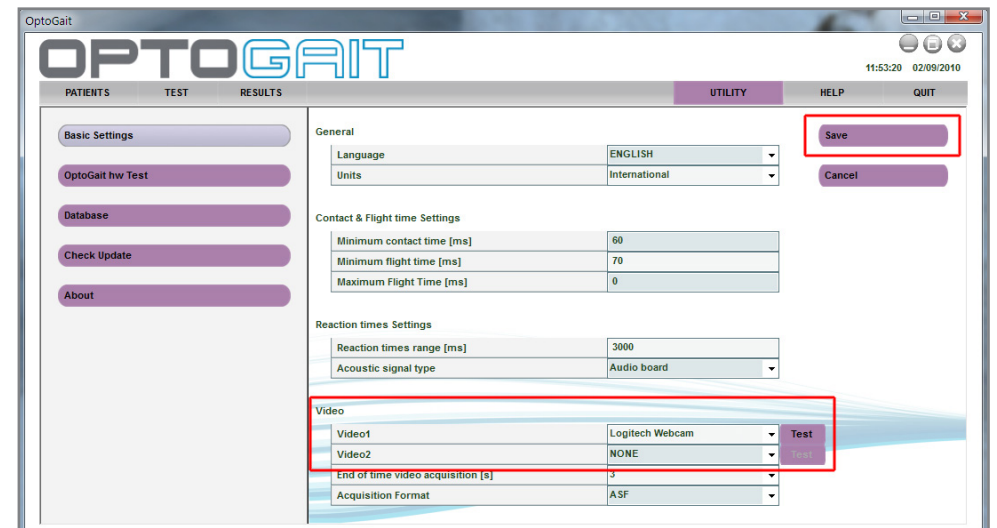


Figure 8